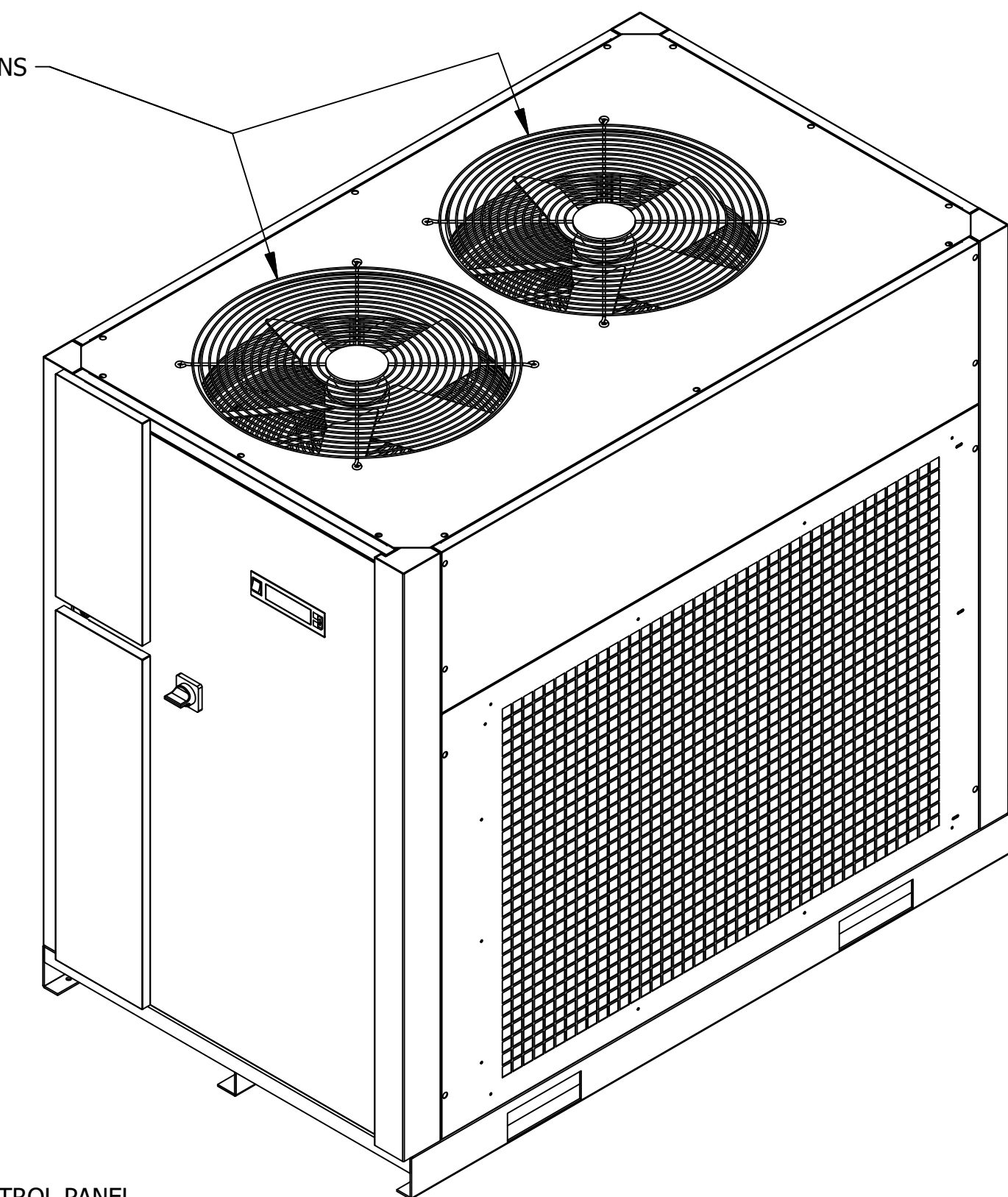


TOP VIEW



COOLING FANS

CONTROL PANEL

DISCONNECT SWITCH

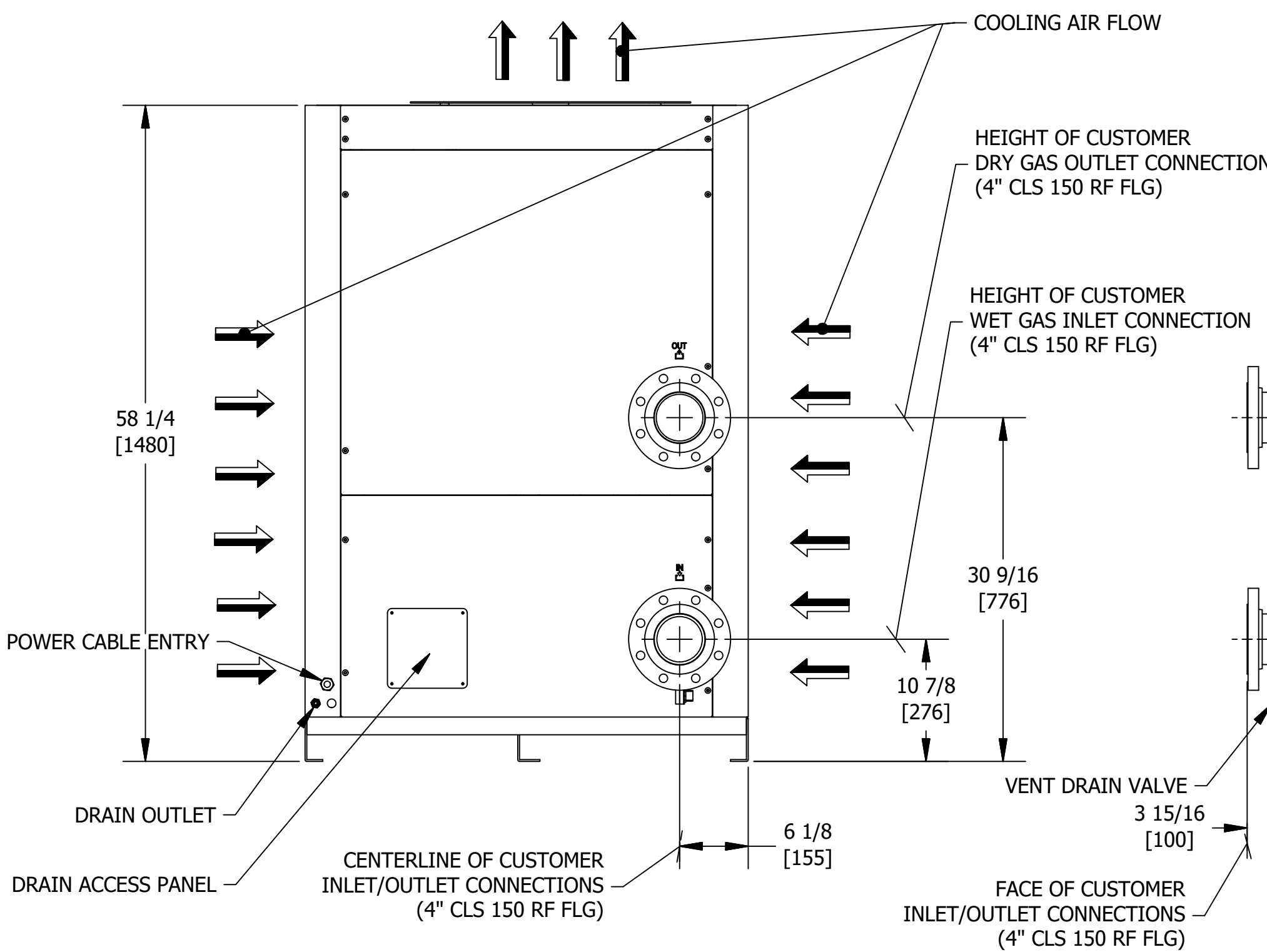
SERVICE:  
COMPRESSED AIR

DRYER INFORMATION:  
INLET AIR FLOW: 2000 SCFM | 56.7 Nm<sup>3</sup>/min  
CONNECTIONS: 4" CLS 150 RF FLG  
REFRIGERANT: R407C  
ELECTRICAL: 460V/3PH/60Hz  
WEIGHT: 2028 LBS. / 920 KG

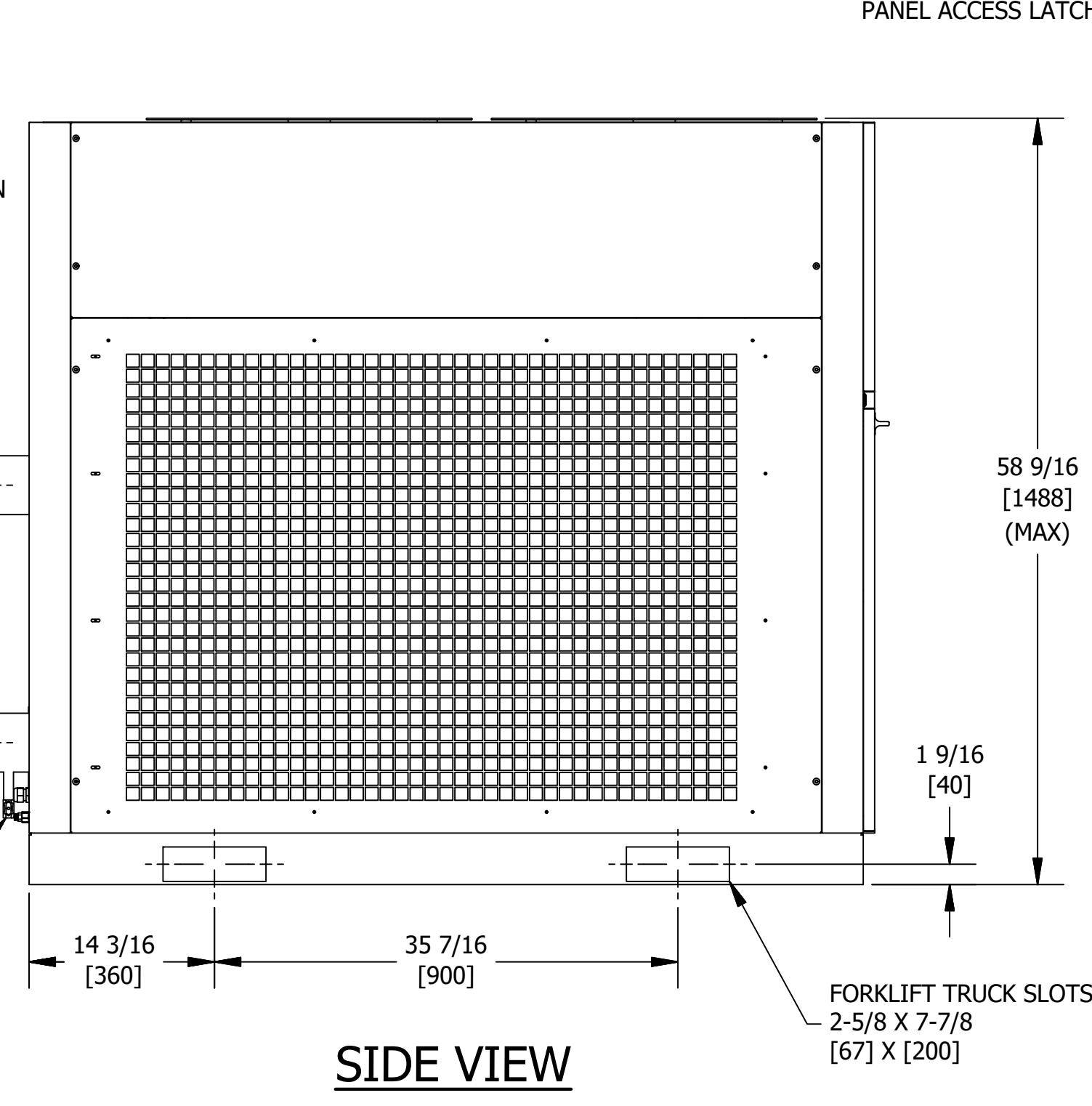
OPERATING CONDITIONS:  
RATED INLET AIR PRESSURE: 100 PSIG / 6.9 BARG  
MAXIMUM INLET AIR PRESSURE: 232 PSIG / 16 BARG  
MINIMUM INLET AIR PRESSURE: 44 PSIG / 3 BARG  
RATED INLET AIR TEMPERATURE: 100°F / 38°C  
MAXIMUM INLET AIR TEMPERATURE: 122°F / 50°C  
MINIMUM INLET AIR TEMPERATURE: 39°F / 4°C  
RATED AMBIENT AIR TEMPERATURE: 100°F / 38°C  
MAXIMUM AMBIENT AIR TEMPERATURE: 113°F / 45°C  
MINIMUM AMBIENT AIR TEMPERATURE: 36°F / 2°C

SPECIFICATIONS:  
CONDENSER TYPE: AIR COOLED  
DRAIN TYPE: ELECTRONIC AUTO DRAIN VALVE  
EXPANSION DEVICE: CAPILLARY TUBES

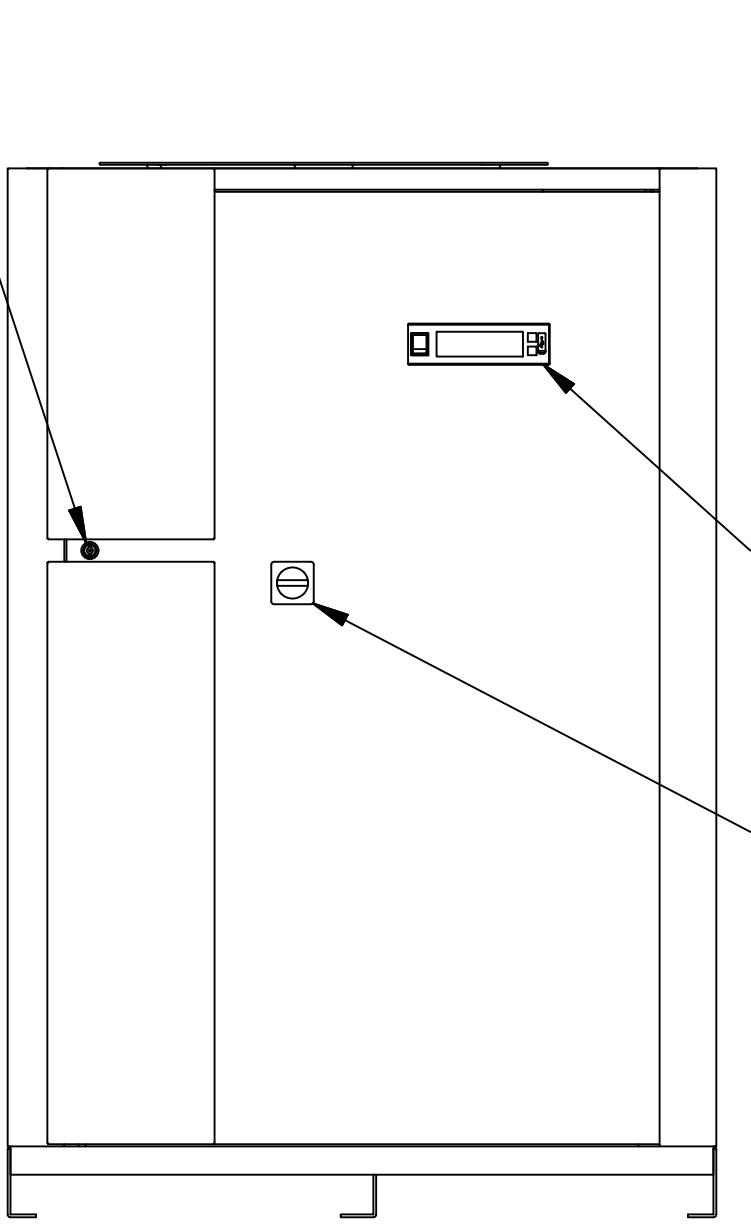
- NOTES:
- THIS DRAWING ALONG WITH THE MANUAL PROVIDES OPERATING CONDITIONS, SPECIFICATIONS, INSTALLATION, MOUNTING, AND CONNECTION REQUIREMENTS. READ THE MANUAL PRIOR TO INSTALLATION.
  - INSTALL IN A CLEAN, WELL VENTILATED AREA TO REDUCE DIRT AND DUST ON THE CONDENSER COILS.
  - FOR COOLING AIR FLOW AND MAINTENANCE PURPOSES, RECOMMENDED CLEARANCE AROUND UNIT IS 4 FEET [1220 MM].
  - INSTALLATION CONSTRAINTS. ON-SITE ASSEMBLY OF PIPING, TUBING AND/OR ELECTRICAL CONNECTIONS, ARE THE RESPONSIBILITY OF THE CUSTOMER/OWNER.



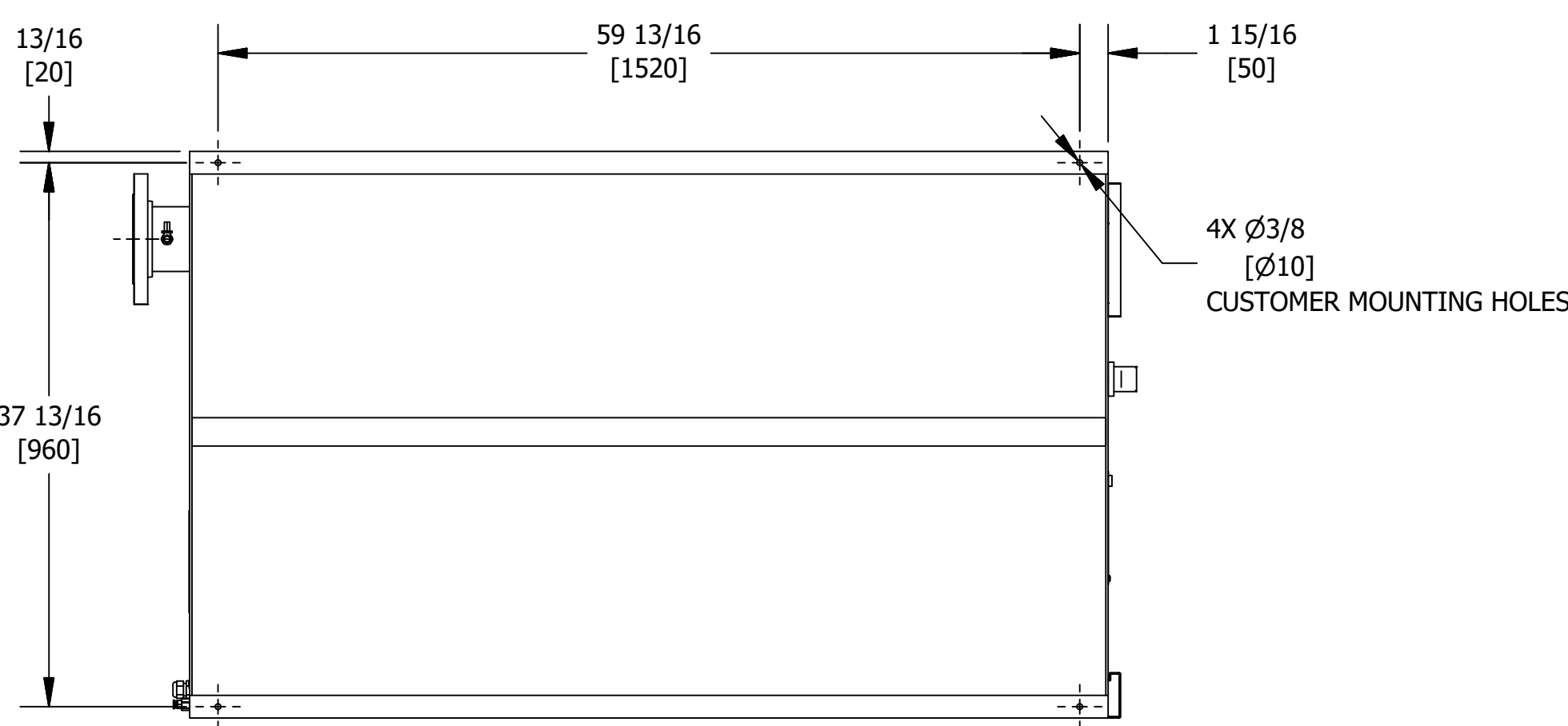
REAR VIEW



SIDE VIEW



FRONT VIEW



FOOT PRINT

UNLESS OTHERWISE SPECIFIED:		NAME	DATE	UNAUTHORIZED USE, MANUFACTURE, OR REPRODUCTION IN WHOLE OR IN PART IS PROHIBITED. DRAWING DESIGN AND OTHER DISCLOSURES ARE PROPERTY OF:
DIMENSIONS ARE IN: INCHES (MM)		DWN BY	CRH	
SURFACE FINISH: N/A		ENG BY	BJM	8/2/2019
TOL.	MM	INCHES	CHK BY	BJM
.X			APP BY	DEH
.XX			REL BY	MDB
.XXX			MAT NO:	
FRACT: ±1/2	ANG: ±2°	SCALE: 3/32		SIZE DWG NO: D GA03DEL-0203
				REV: 1/1



GENERAL ARRANGEMENT

DFX 20.1